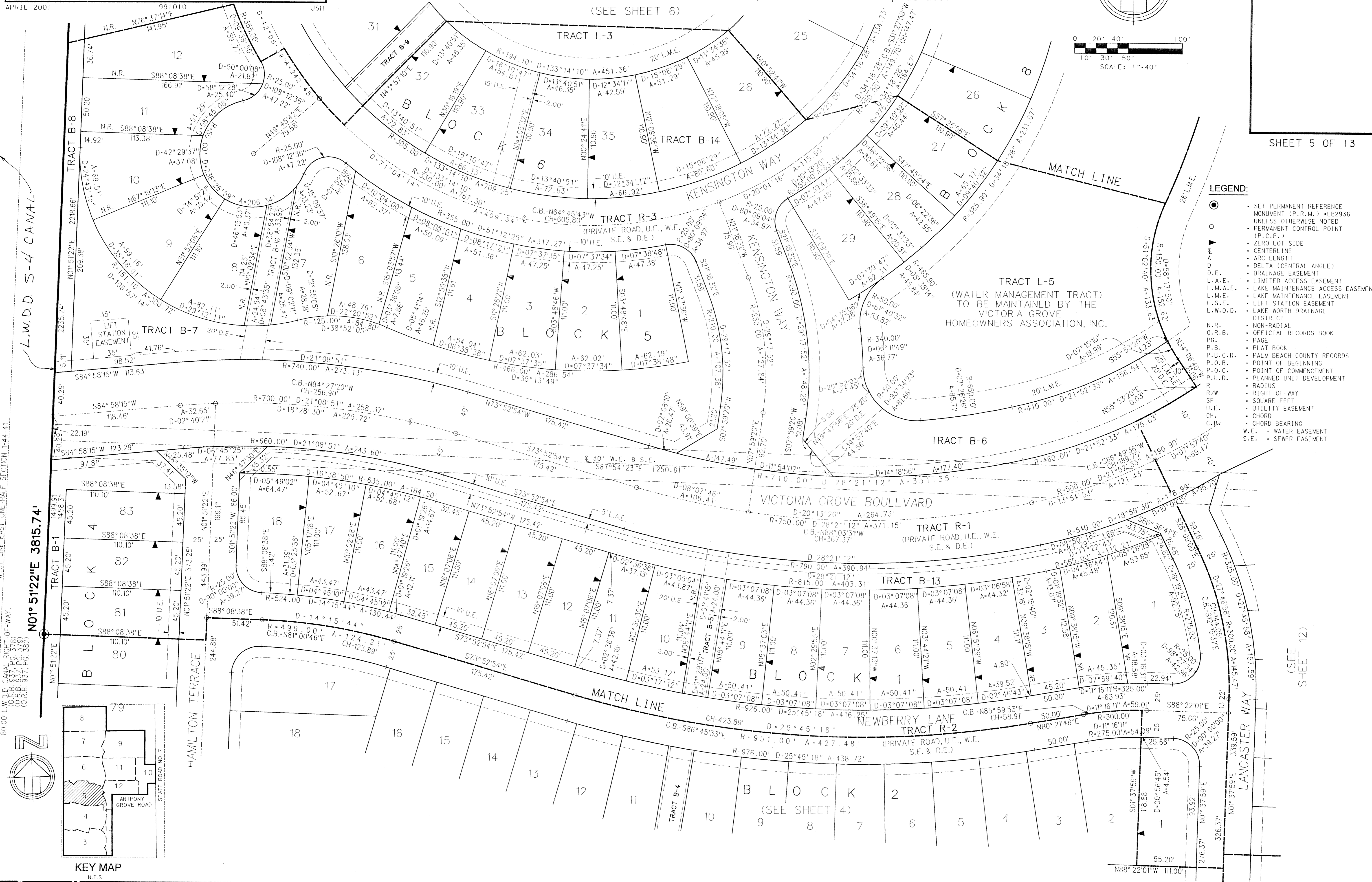
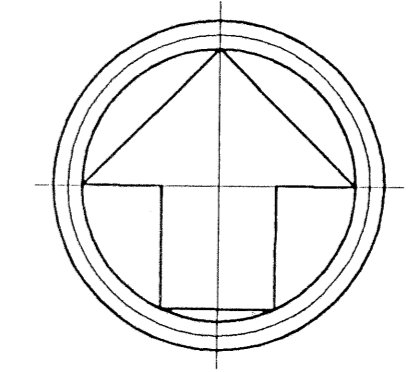


ANTHONY GROVES PHASE 1

A PORTION OF SECTION 1, TOWNSHIP 44 SOUTH, RANGE 41 EAST,
 VILLAGE OF ROYAL PALM BEACH, PALM BEACH COUNTY, FLORIDA

(SEE SHEET 6)

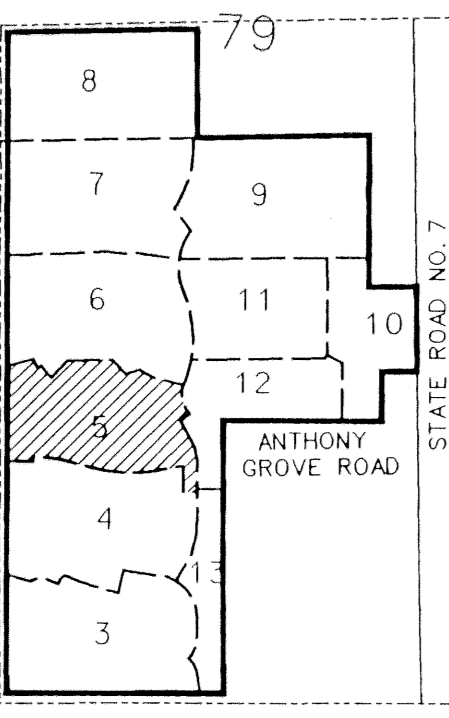


SHEET 5 OF 13

- LEGEND:**
- SET PERMANENT REFERENCE MONUMENT (P.R.M.) +LB2936 UNLESS OTHERWISE NOTED
 - PERMANENT CONTROL POINT (P.C.P.)
 - ▲ ZERO LOT SIDE
 - CENTERLINE
 - ARC LENGTH
 - DELTA (CENTRAL ANGLE)
 - DRAINAGE EASEMENT
 - LIMITED ACCESS EASEMENT
 - LAKE MAINTENANCE ACCESS EASEMENT
 - LAKE MAINTENANCE EASEMENT
 - LIFT STATION EASEMENT
 - LAKE WORTH DRAINAGE DISTRICT
 - NON-RADIAL
 - OFFICIAL RECORDS BOOK
 - PAGE
 - PLAT BOOK
 - PALM BEACH COUNTY RECORDS
 - POINT OF BEGINNING
 - POINT OF COMMENCEMENT
 - PLANNED UNIT DEVELOPMENT
 - RADIUS
 - RIGHT-OF-WAY
 - SQUARE FEET
 - UTILITY EASEMENT
 - CHORD
 - CHORD BEARING
 - WATER EASEMENT
 - SEWER EASEMENT

WEST LINE, EAST ONE-HALF SECTION 1-44-41
 80.00' L.W.D.D. CANAL, RIGHT-OF-WAY
 (O.R.B. 937, P.C. 3789)
 (O.R.B. 937, P.C. 382)
 (O.R.B. 937, P.C. 382)

N01° 51'22"E 3815.74'



KEY MAP
N.T.S.